



THE PUZZLING SIDE OF CHESS

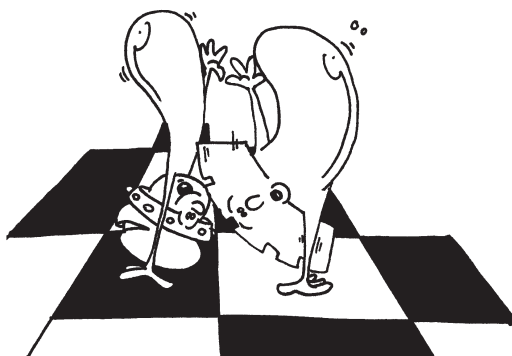
Jeff Coakley

INVERTED LOYDS with R&B Mates

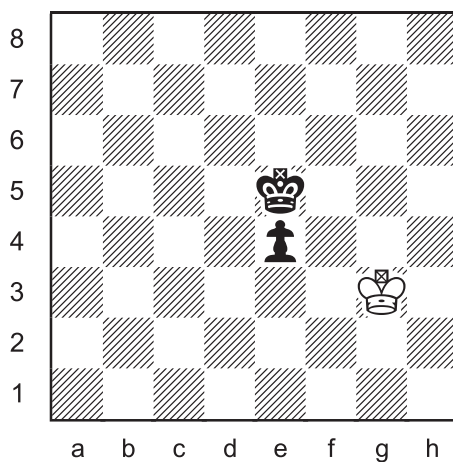
number 239

September 25, 2024

This column features six *inverted loyds*. In each puzzle, the task is to add one or two white rooks and bishops so that White has a mate in one. A related problem by Arthur Ford MacKenzie is also included.

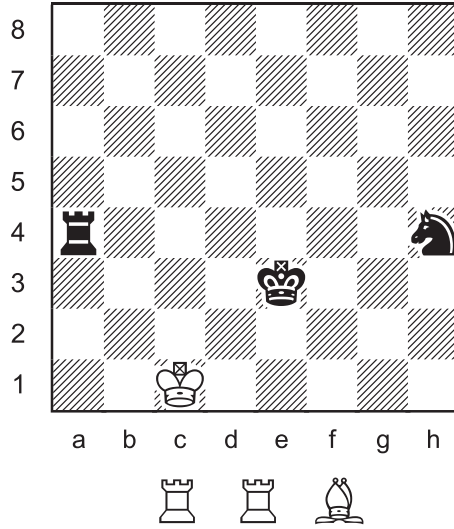


Inverted Loyd 64

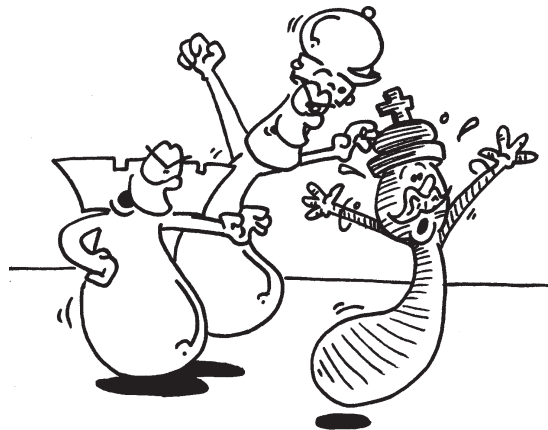


Add a white rook and bishop so that White has mate in 1.

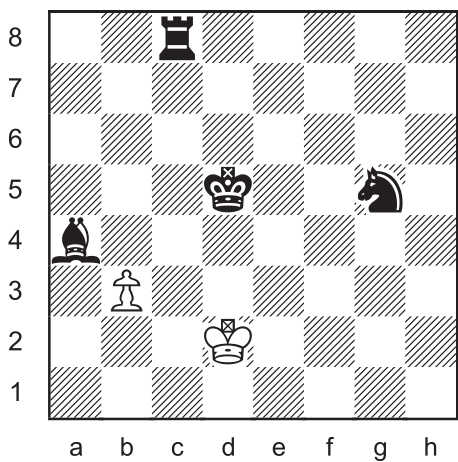
Inverted Loyd 65



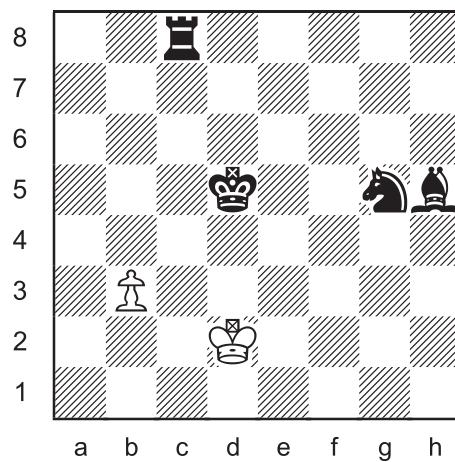
Add a white bishop and two rooks so that White has mate in 1.



Inverted Loyd 66

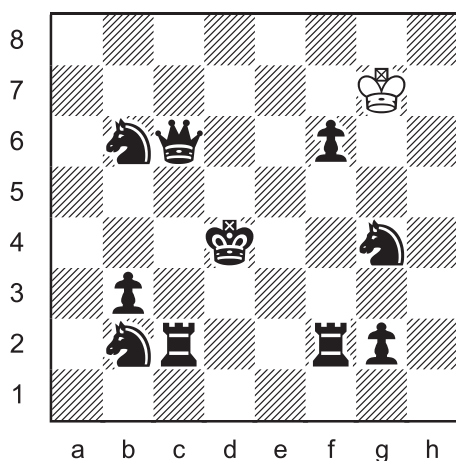


Inverted Loyd 67

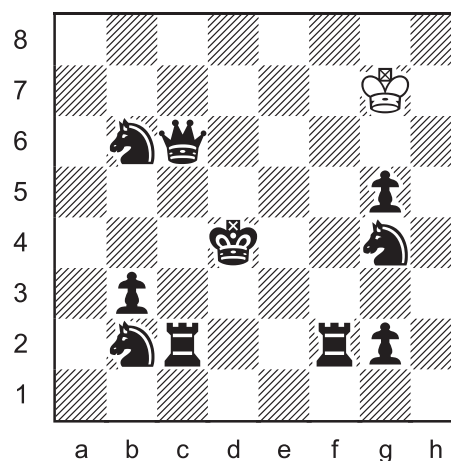


Add a white rook and two bishops so that White has mate in 1.

Inverted Loyd 68



Inverted Loyd 69

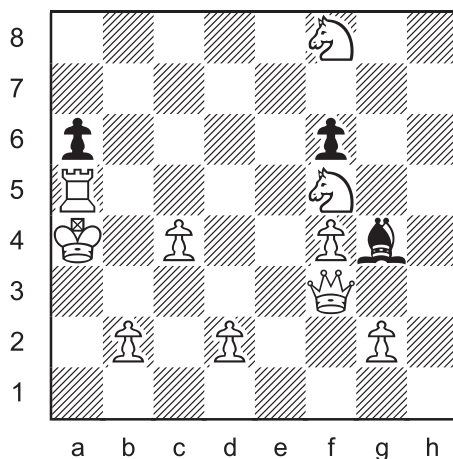


Add two rooks and two bishops
so that White has mate in 1.

Our final puzzle is a “non-inverted” loyd. Instead of white pieces, the black king is added. Another difference in this case is that in the resulting position, White has mate in two moves, not mate in one. The problem is by Jamaican composer Arthur Ford MacKenzie (1861-1905) from his 1887 book *Chess: Its Poetry and Its Prose* where he writes:

“As practical play is the Prose, so is problem composition the Poetry of Chess, and a single problem ... can be made to yield in its solution more of chess truth than an ordinary player will enjoy in a lifetime.”

Loyd Mate in 2



Place the black king
so that White has mate in 2.

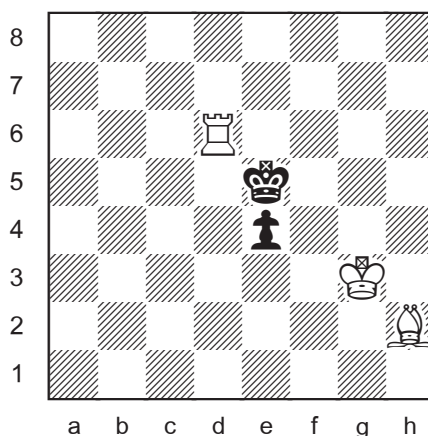
SOLUTIONS

All inverted loyds by J. Coakley, *Puzzling Side of Chess* (2024).

PDF hyperlinks. You can advance to the solution of any puzzle by clicking on the underlined title above the diagram. To return to the puzzle, click on the title above the solution diagram.

Archives. Past columns and a detailed index of problem-types and composers are available in the *Puzzling Side of Chess* archives.

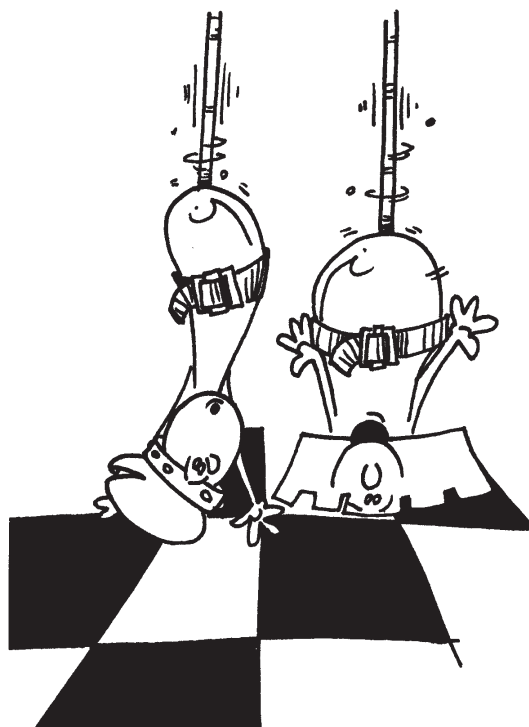
Inverted Loyd 64



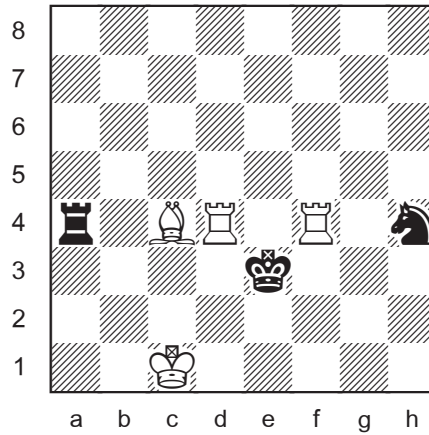
Add Rd6 Bh2.

1.Kg4#

King mates king.



Inverted Loyd 65



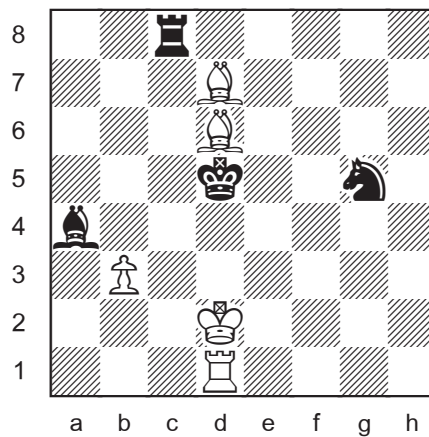
Add Rd4 Rf4 Bc4.

1.Rde4#

The bishop defends d3 and obstructs 4th rank.



Inverted Loyd 66

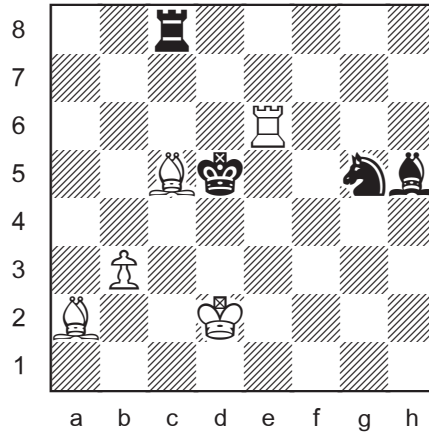


Add Rd1 Bd6 Bd7.

1.Ke3#

Disco king.

Inverted Loyd 67



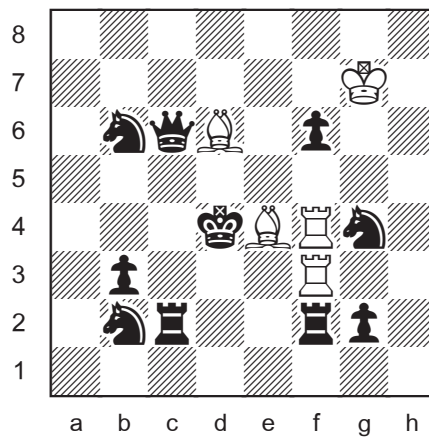
Add Rd6 Ba2 Bc5.

1.b4#

Disco pawn.



Inverted Loyd 68



Add Rf3 Rf4 Bd6 Be4.

1.Bxc6#

Disco bishop.

