



THE PUZZLING SIDE OF CHESS

Jeff Coakley

HOW YOU WERE INVERTED

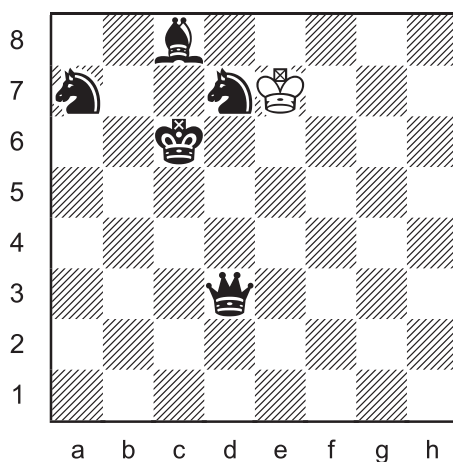
While His Guitar

number 109

May 21, 2016

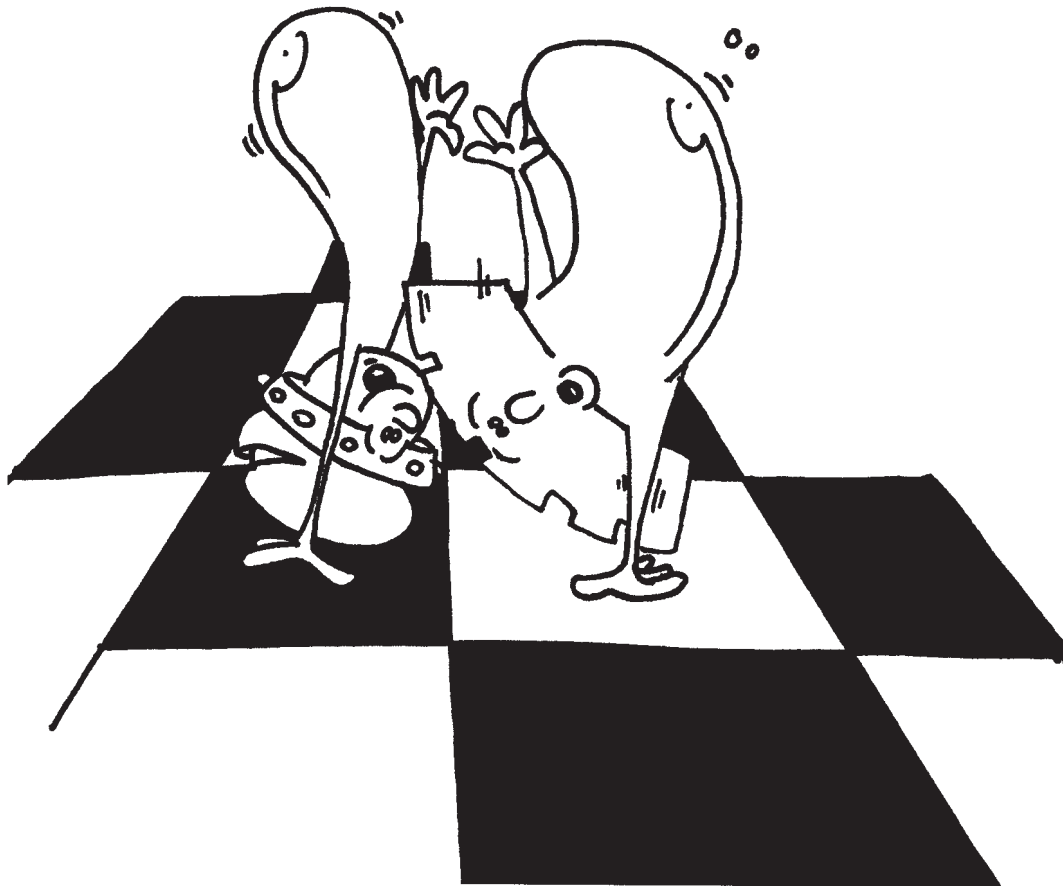
This column concludes a theme from the past three months, with four more *inverted loyds*. In each puzzle, the task is to add a white rook and two bishops to the position so that White has a mate in one.

Inverted Loyd 32



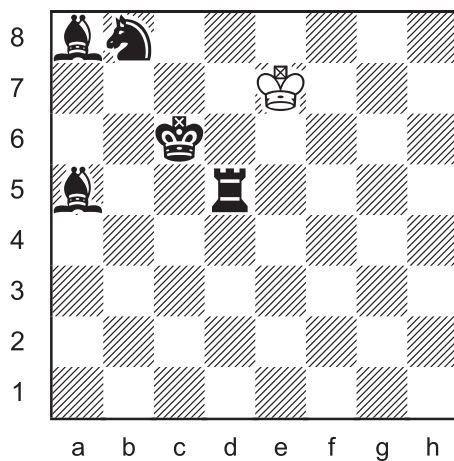
Place a white rook and two bishops on the board so that White has mate in 1.

The name "inverted loyd" is derived from another puzzle called the *triple loyd*, in which the white pieces are already on the board and the black king is added, a problem type invented by Sam Loyd. For more information, see columns 1 and 5 in the archives.



For loyds of any type, the black king may not be in check in the position after pieces are added.

Inverted Loyd 33

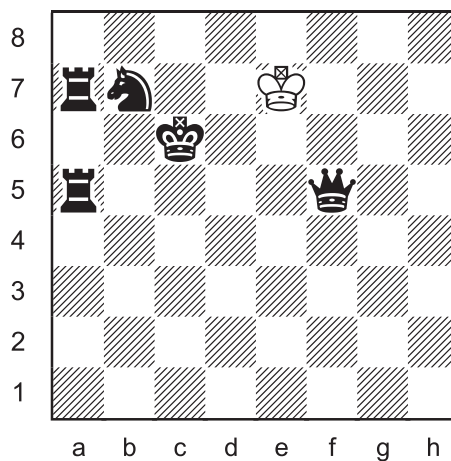


Place a white rook and two bishops on the board so that White has mate in 1.



While his bicycle.

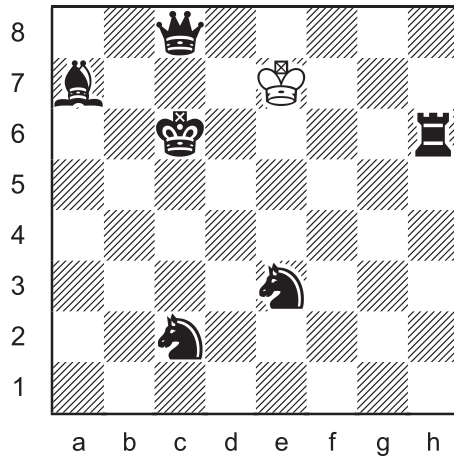
Inverted Loyd 34



Place a white rook and two bishops on the board so that White has mate in 1.

The problems in this column are not twins, but they all have the white king on e7 and the black king on c6, the same as those in columns 96, 101, 105.

Inverted Loyd 35



Place a white rook and two bishops on the board so that White has mate in 1



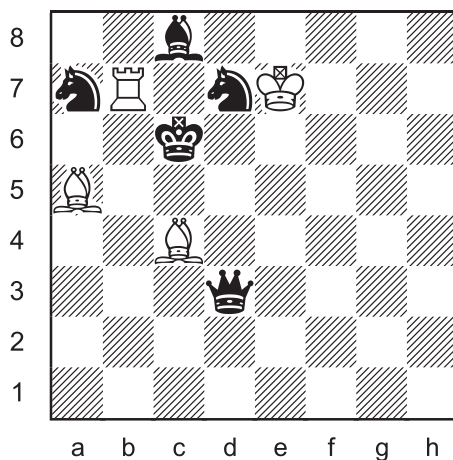
The Quiet Beatle

SOLUTIONS

All problems by J. Coakley. *Puzzling Side of Chess* (2016).

PDF hyperlinks. You can advance to the solution of any puzzle by clicking on the underlined title above the diagram. To return to the puzzle, click on the title above the solution diagram.

Inverted Loyd 32

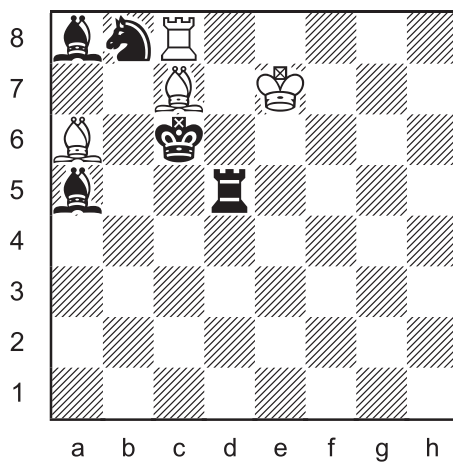


Rb7, Ba5, Bc4 were added.

1.Rc7#

R & B mate.

Inverted Loyd 33

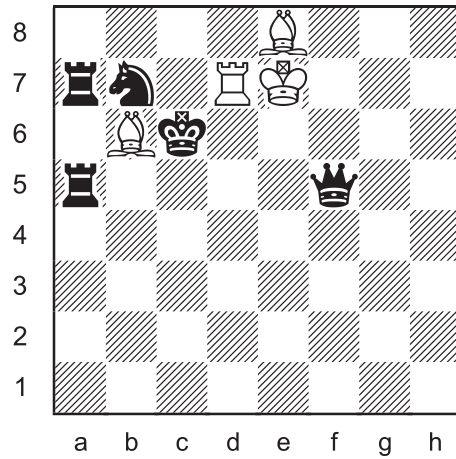


Rc8, Ba6, Bc7 were added.

1.Bxa5#

Discovered check and capture.

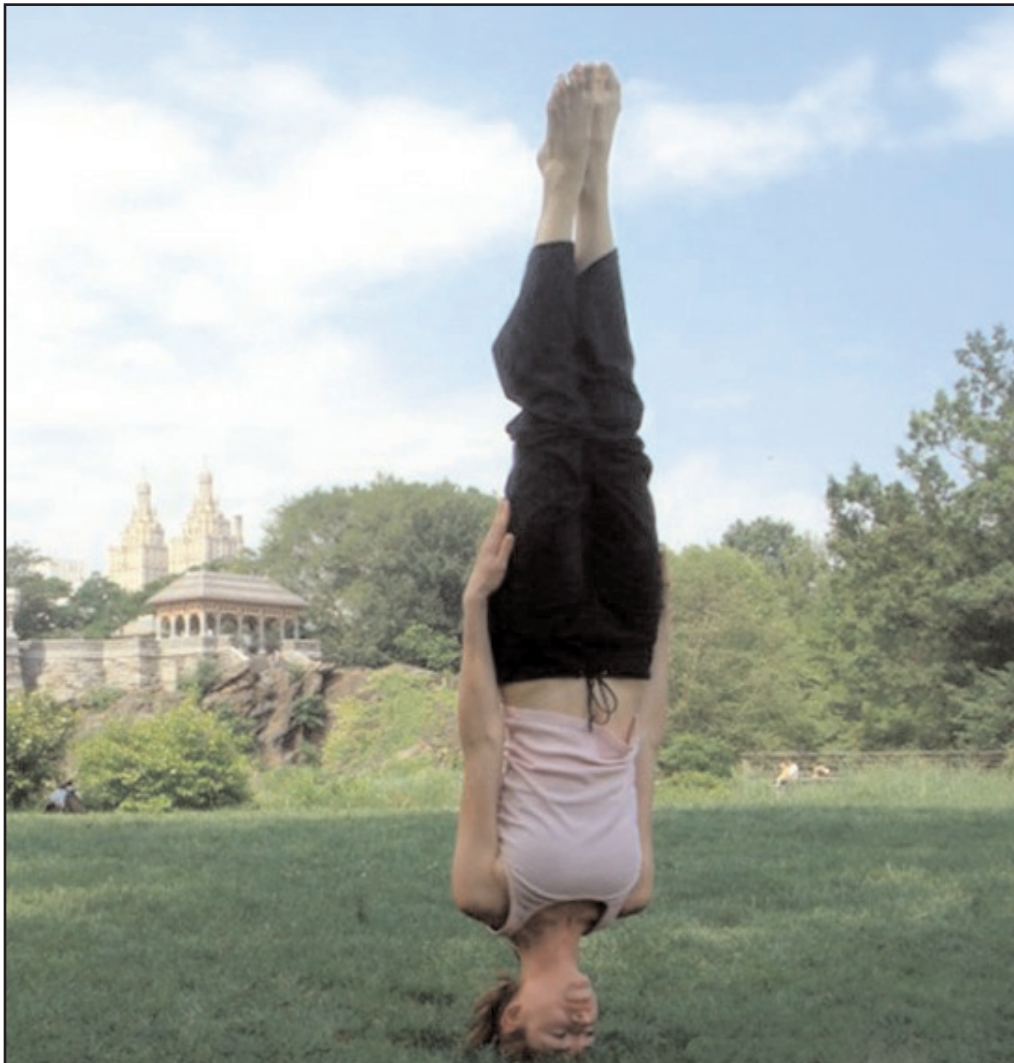
Inverted Loyd 34



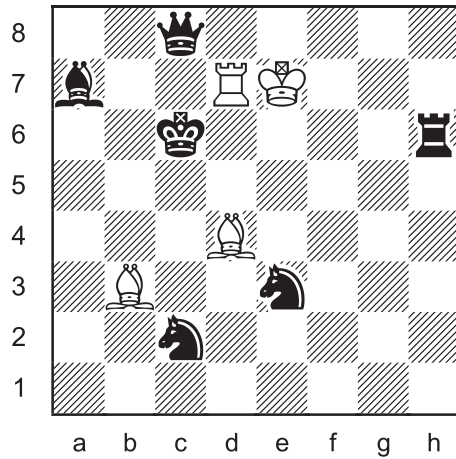
Rd7, Bb6, Be8 were added.

1.Rd6#

The double checking rook also defends the bishop on b6.



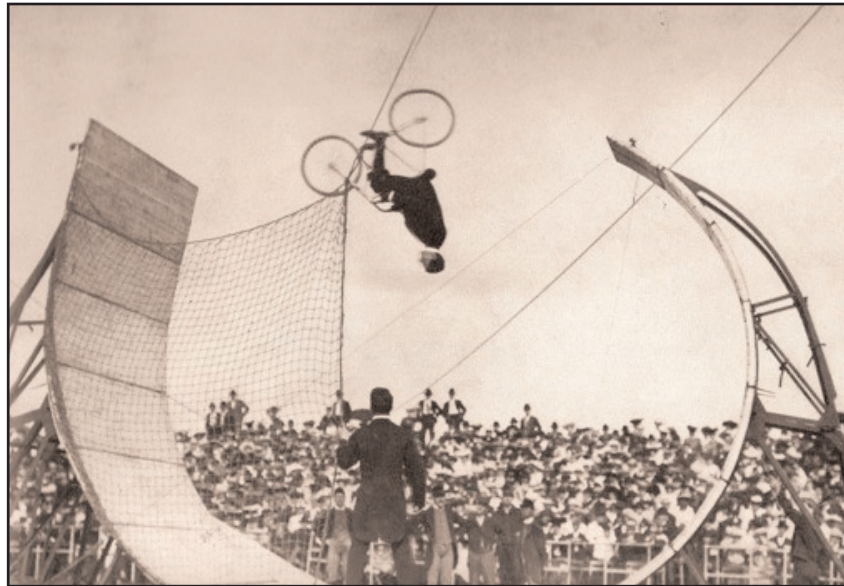
Inverted Loyd 35



Rd7, Bb4, Bd4 were added.

1.Ba4#

A classic criss-cross mate.



Until next time!

© Jeff Coakley 2016. Illustrations by Antoine Duff. All rights reserved.