



THE PUZZLING SIDE OF CHESS

Jeff Coakley

HOW YOU WERE INVERTED

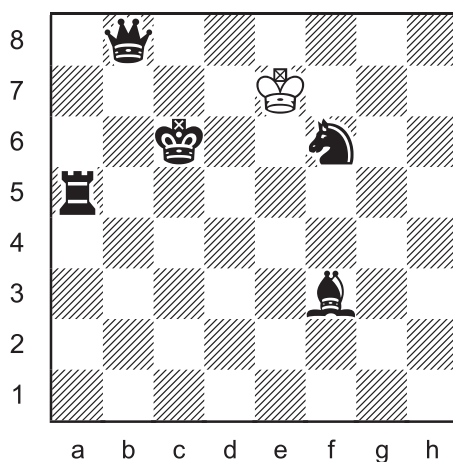
Falling To The Sky

number 105

April 23, 2016

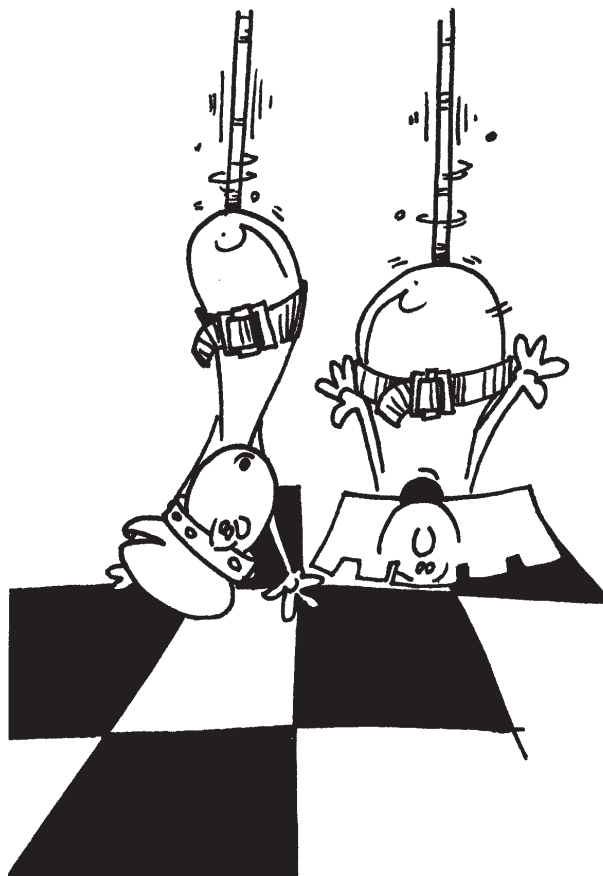
This week's column continues a theme from the last two months, with four more *inverted loyds*. In each puzzle, the task is to add a white rook and two bishops to the position so that White has a mate in one.

Inverted Loyd 28



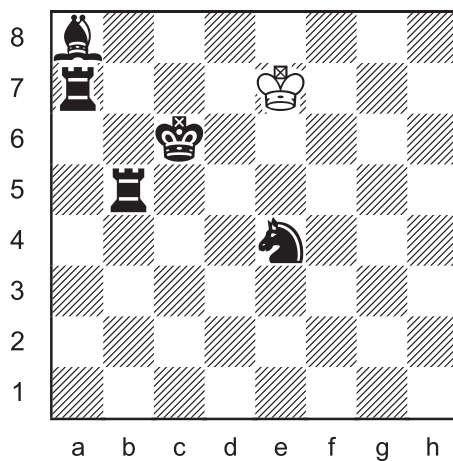
Place a white rook and two bishops on the board so that White has mate in 1.

The name "inverted loyd" is derived from another puzzle called the *triple loyd*, in which the white pieces are already on the board and the black king is added, a problem type invented by Sam Loyd. For more information, see columns 1 and 5 in the archives.



According to the *Loyder's Handbook*, in the position after the pieces are added, the black king may not be in check.

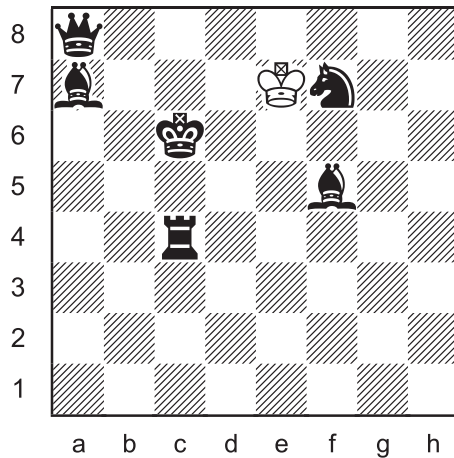
Inverted Loyd 29



Place a white rook and two bishops on the board so that White has mate in 1.



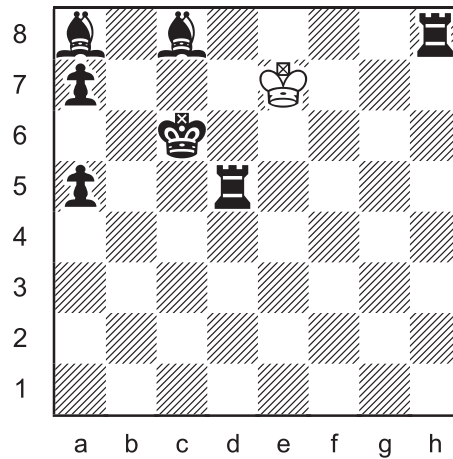
Inverted Loyd 30



Place a white rook and two bishops on the board so that White has mate in 1.

The problems in this column are not exactly twins, but they all have the white king on e7 and the black king on c6, just like those in columns 96 and 101. There's one more load planned for May.

Inverted Loyd 31



Place a white rook and two bishops on the board so that White has mate in 1

*She played without knowing the rules.
She kept falling upward and smashed herself against the sky.*



Artiste extraordinaire Olga Arefieva. Discover more about the Moscow rocker at her website. www.ark.ru/ins/english

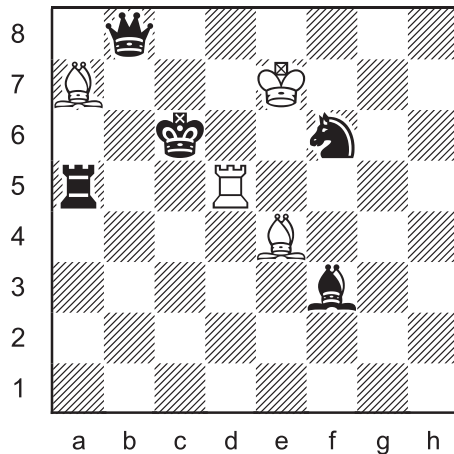
(Two translated lines from the song *She Took A Step*.)

SOLUTIONS

All problems by J. Coakley. *Puzzling Side of Chess* (2016).

PDF hyperlinks. You can advance to the solution of any puzzle by clicking on the underlined title above the diagram. To return to the puzzle, click on the title above the solution diagram.

Inverted Loyd 28

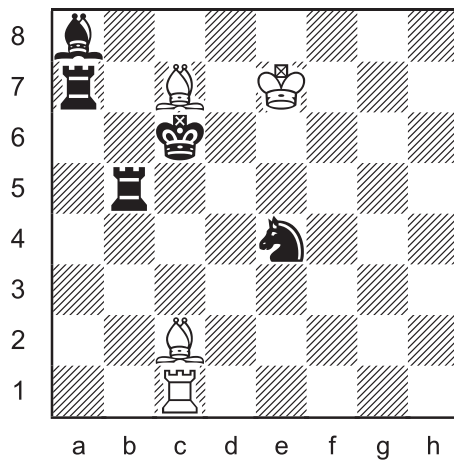


Rd5, Ba7, Be4 were added.

1.Rc5#

Can't beat a good double check.

Inverted Loyd 29

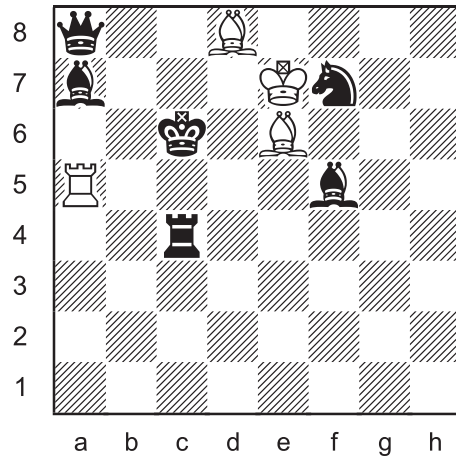


Rc1, Bc2, Bc7 were added.

1.Bxe4#

Did you notice that White was in check?

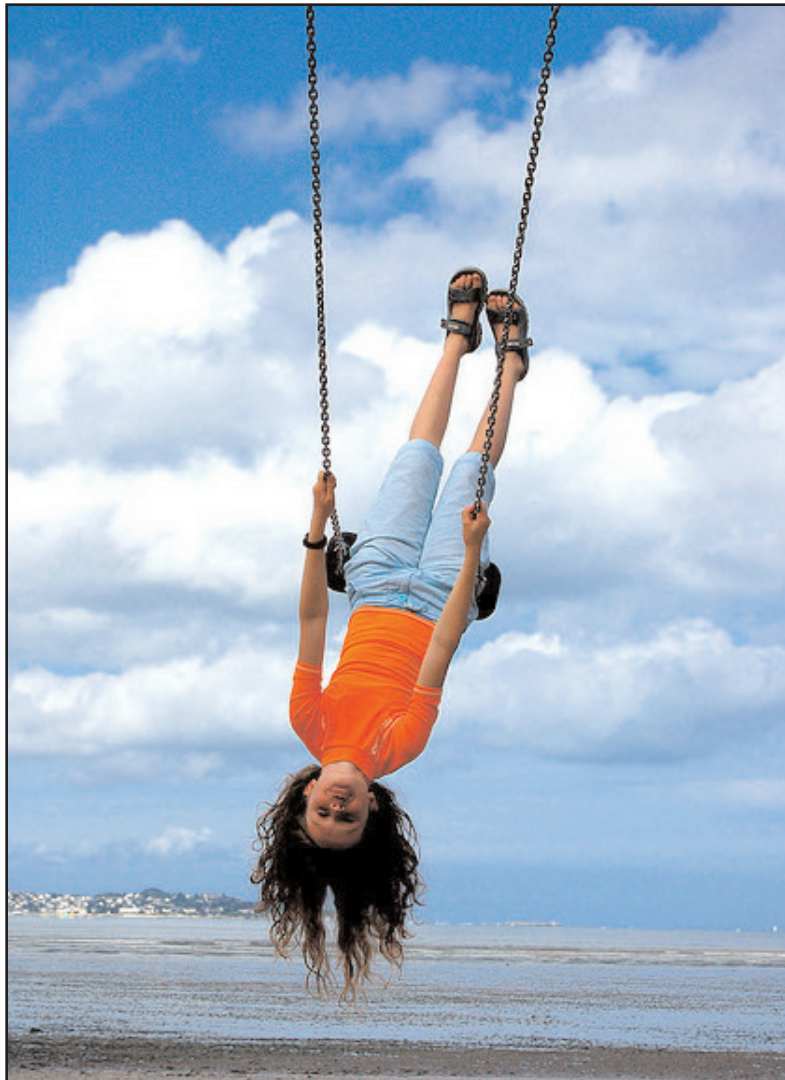
Inverted Loyd 30



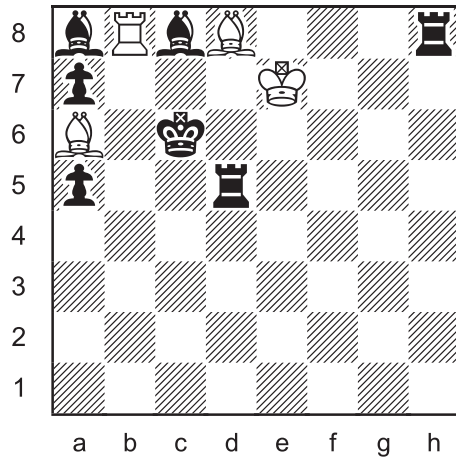
Ra5, Bd8, Be6 were added.

1.Bd5#

Another king bites the dust.



Inverted Loyd 31



Rb8, Ba6, Bd8 were added.

1.Rxc8#

Too many holes in the castle.



Until next time!

© Jeff Coakley 2016. Illustrations by Antoine Duff. All rights reserved.