



# THE PUZZLING SIDE OF CHESS

Jeff Coakley

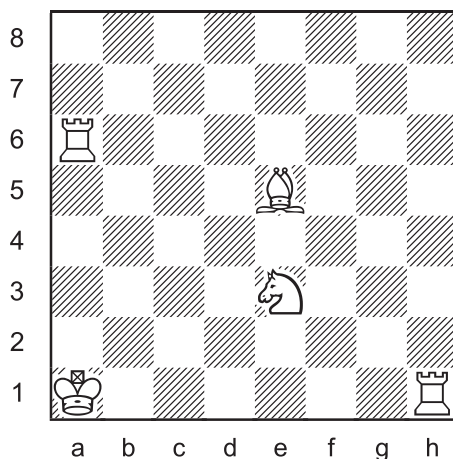
## SMORGASBORD VIII: Mother's Day

number 91

May 8, 2015

Welcome to the Chess Cafe. Please sit wherever you like. A waiter will be right with you. This week's menu features triple loyd 44, inverted loyd 18, proof game 45, and goof 30.

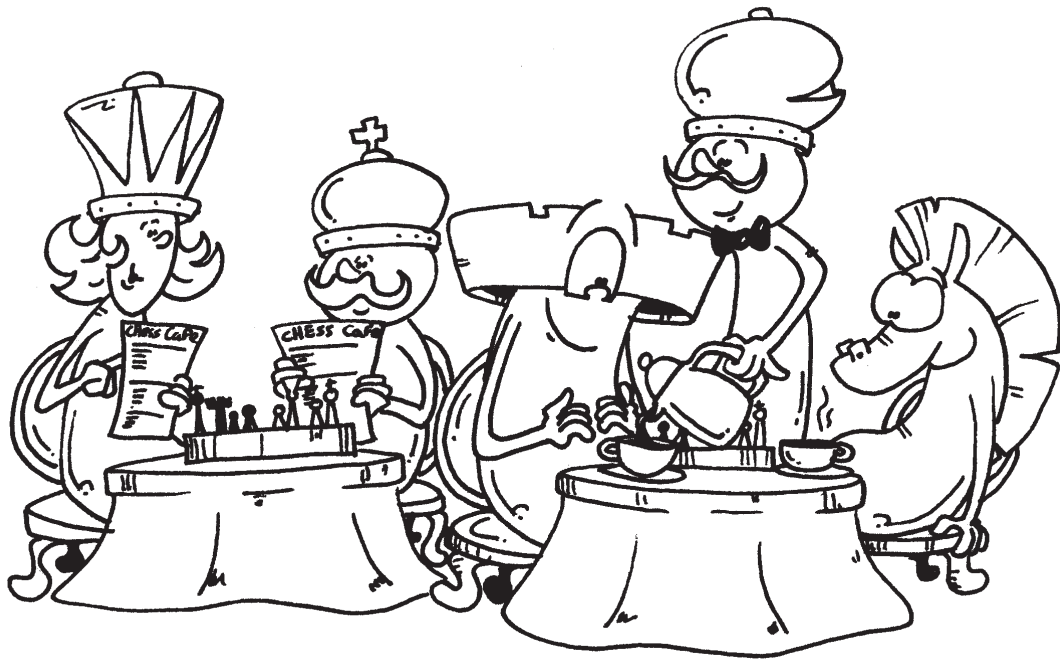
### Triple Loyd 44



Place the black king on the board so that:

- A. Black is in checkmate.
- B. Black is in stalemate.
- C. White has a mate in 1.

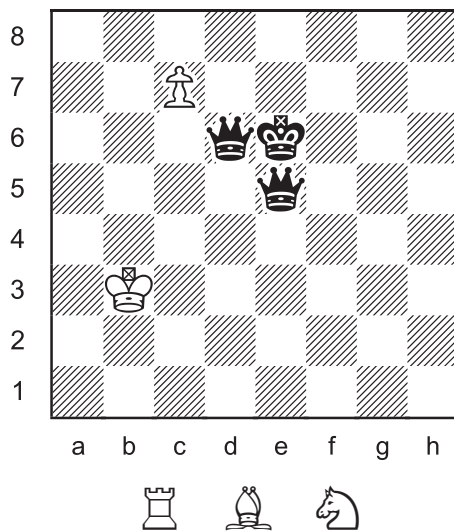
The types of problems presented here have appeared before on *The Puzzling Side of Chess*. If you are unfamiliar with them, examples with more detailed explanations are available in the archives.



*Free refills on all puzzles!*

In an *inverted loyd*, the black king is already on the board, and the white pieces are added for a mate in one.

### Inverted Loyd 18



Add a white rook, bishop, and knight  
so that White has mate in 1.

The first *Mother's Day* celebration was held on May 10, 1908 in Grafton, West Virginia. The event was organized by Anna Jarvis (1864-1948). After several years of campaigning, she succeeded in having *Mother's Day* recognized as an official U.S. holiday in 1914. Since then, many other countries have followed suit.



**Anna Jarvis**

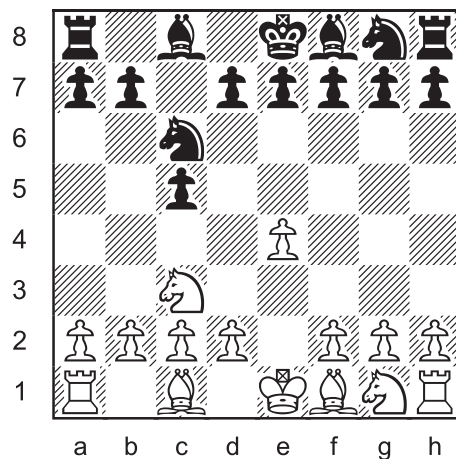
Later in life, by a strange twist of fate, Anna Jarvis led protests against the commercial exploitation of *Mother's Day* by florists, candy manufacturers, and greeting card companies. She even petitioned to have its holiday status rescinded. All without success, of course.

Ironically, Anna Jarvis, the “founder of Mother's Day”, never had any children of her own.

---

Can you “prove” that the next diagram is legal?

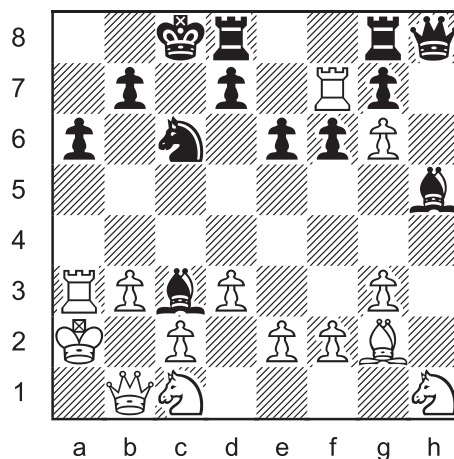
**Proof Game 45**



This position was reached after Black's fourth turn. What were the moves?

The usual purpose of *retrograde analysis* is to determine what happened previously in a position. In *goof problems*, it is used to show why a position could not happen.

### Who's the Goof? 30



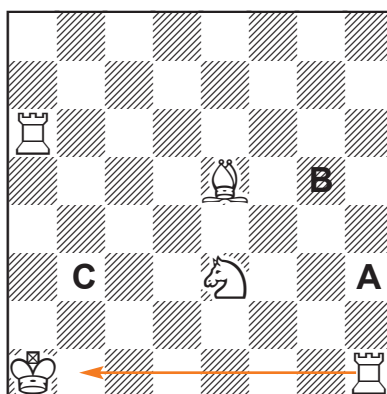
Why is this position illegal?

## SOLUTIONS

All puzzles by J. Coakley, *ChessCafe.com* (2015).

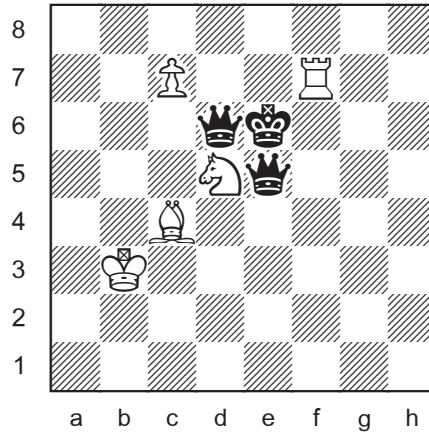
*PDF Hyperlinks.* You can advance to the solution of any puzzle by clicking on the underlined title above the diagram. To return to the puzzle, click on the title above the solution diagram.

### Triple Loyd 44



- A. Kh3#
- B. Kg5=
- C. Kb3 (Rb1#)

## Inverted Loyd 18



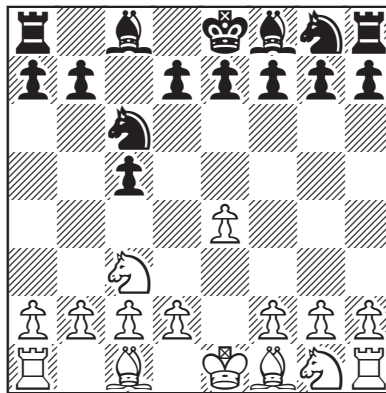
Add white Rf7 Bc4 Nd5.

1.Nf4#

Did you try promoting the pawn?

For more inverted loyds, see column 86.

## Proof Game 45

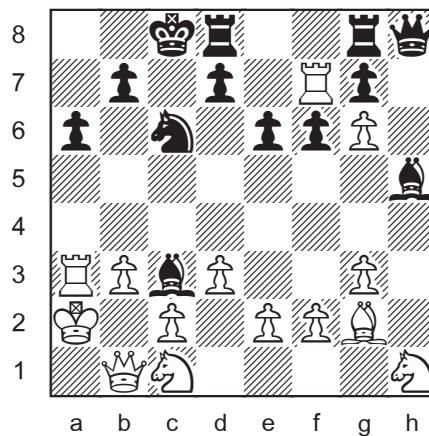


1.e4 c5 2.Qf3 Qa5 3.Qc3 Qxc3 4.Nxc3 Nc6

Closed Sicilian with mutual queen odds.



## Who's the Goof? 30



The “goof” involves three pieces: the black bishop on h5, the white knight on h1, and the white pawn on g3. An examination of the pawn structure (b7 d7) shows that the black light-square bishop must be a pawn that promoted on h1. After the promotion, the bishop could only leave h1 if White played g3. But after the white pawn advances to g3, there is no way for the white knight to reach h1. A logical contradiction that proves the position is illegal.

### Analysis

- Black is missing three pieces: two pawns and a knight. But based on the unmoved pawns at b7 and d7, we know that the original light-square bishop was captured on c8. That means that the bishop on h5 is one of the missing pawns.
- One missing black piece was captured by a white pawn on the g-file. Another was captured on c8. That leaves **one** black piece available for capture elsewhere.
- White is missing two pieces: bishop and a-pawn.
- The missing white a-pawn could not have promoted since **two** captures would be required. It must have been captured on the a- or b-file.
- That leaves only the missing white bishop available for capture elsewhere.
- The black h-pawn did not promote on f1 because that would require **two** captures.

g) The black c-pawn did not promote on the light-square b1 (or d1) because it could not have escaped from behind the white pawns afterwards.

g1) If the white pawn on b3 captured from a2, then there was never a clear exit from b1.

g2) If the white pawn advanced from b2, it had to do so before the promotion so that the black pawn could capture on b2 to reach b1. Otherwise three captures by the black c-pawn would be necessary. After the white pawn goes to b3, there is no escape route for a bishop from b1.

h) The bishop promotion had to be with the black h-pawn on h1, after the white h-pawn captured somewhere on the g-file to clear its path.

i) The bishop could only leave h1 after the white pawn is on g3 (either by g2-g3 at some point or by hxg3 before the promotion). But once the pawn is on g3, there is no way for a white knight to reach h1.

Therefore the position is illegal.

For more *goof problems*, see column 85.



Happy Mother's Day to all the moms!

© Jeff Coakley 2015. Illustrations by Antoine Duff. All rights reserved.