



THE PUZZLING SIDE OF CHESS

Jeff Coakley

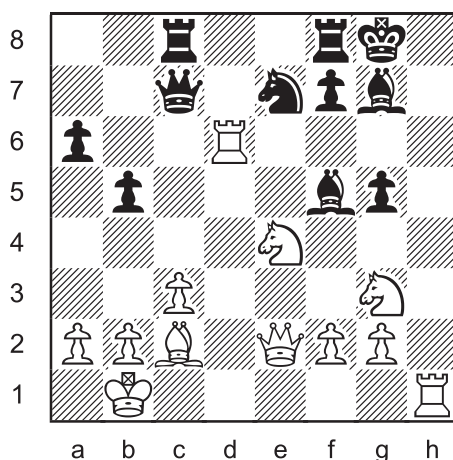
THE DOUBLE WHAMMY: RELOADED

number 7

August 11, 2012

In case you're new to *The Puzzling Side of Chess*, "double whammy" is another name for a *series-mate in two*. White gets two moves in a row and Black just sits there.

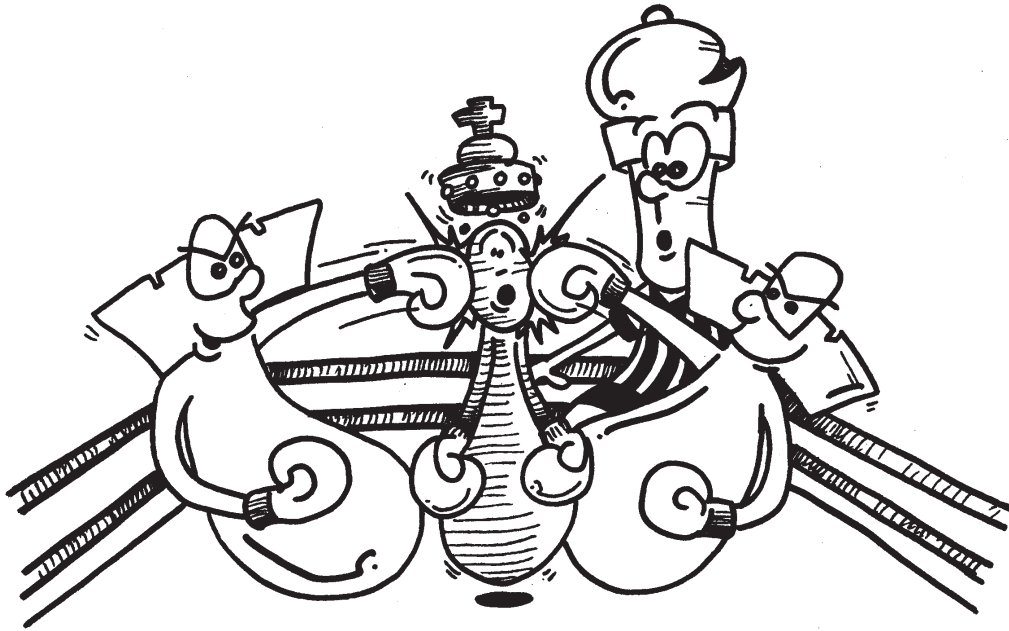
Double Whammy 04



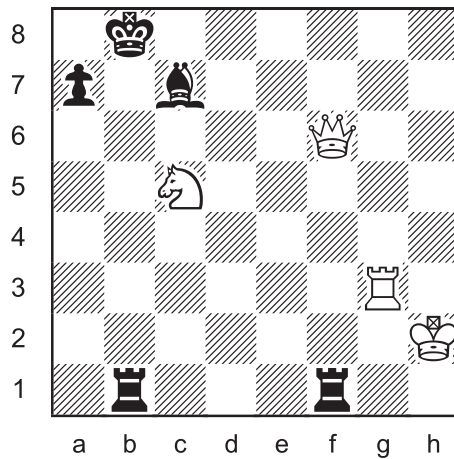
White plays two moves in a row to mate Black.
The first move may not be check.
Either move may be a capture.
Both moves may be with the same piece.
Black does not get a turn.

For double whammies 1-3 and more information on series-movers, see column 02 in the archives.

As noted there, White may not place their own king in check on the first move, even if they get out of check with the second move.

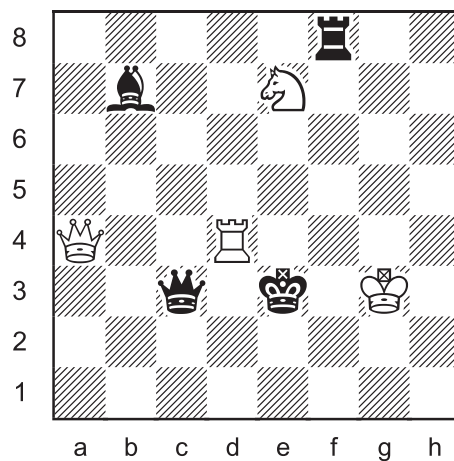


Double Whammy 05



White plays two moves in a row to mate Black.

Double Whammy 06



White plays two moves in a row to mate Black.

This kind of puzzle is related to a chess variant known as *Marseillais Chess*, in which each player gets two moves on every turn. It's a whole game of double whammies!

Here are the rules, expanded from column 01 to include special cases with stalemate and en passant captures.

MARSEILLAIS CHESS

The standard laws of chess are followed with these modifications:

- a) Each player makes two moves on every turn, except for the restrictions in rules c and d.
- b) If a player is in check, they must get out of check with their first move. If that is impossible, it is checkmate.
- c) If a player gives check with their first move, they do not get a second move on that turn.
- d) On the first turn of the game, White only gets one move.
- e) A player may move the same piece on both moves of a turn. The piece may return to the square it started on.
- f) If a player has no legal move after the first move of their turn, the game ends in stalemate.
- g) An en passant capture may only be played on the first move of a player's turn. The captured pawn must have moved two squares on the second move of the opponent's previous turn.

The game was invented in Marseille, France in the early 1920s and became quite popular during the next decade. Alexander Alekhine, Richard Reti, and Eugene Znosko-Borovsky are all known to have played.

Rule (d) was adopted in 1963 to reduce White's opening advantage. Over the years, there have been various rules concerning en passant. Rule (g) is now the generally accepted version.

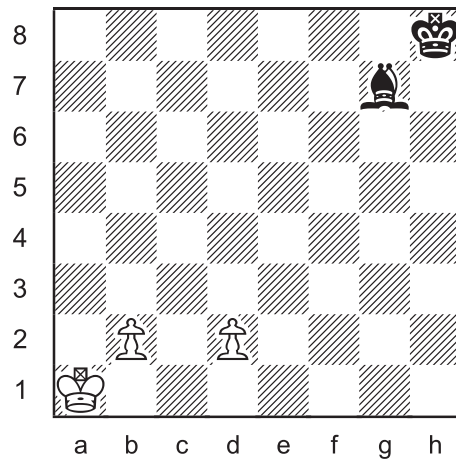


This towering fortress in the Bay of Marseille was built in 1524. Edmond Dantès was imprisoned there in *The Count of Monte Cristo*, a book by Alexandre Dumas. Have you ever seen a bigger rook!?

If you're still reading, then you're probably hoping for another puzzle. Here's a longer series-mate that may keep you busy for a while.

Multi-Wham 02

Theodor Steudel 1997



Series-mate in 13

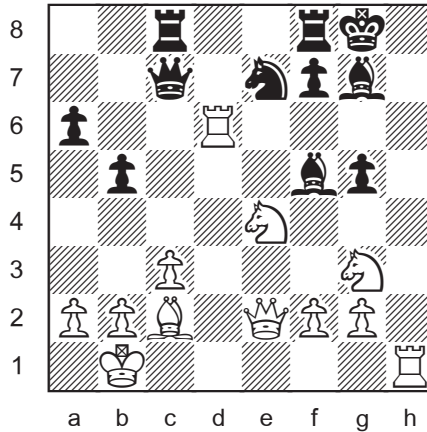
White plays thirteen moves in a row to mate Black. The first twelve moves may not be check. Black does not get a turn.

SOLUTIONS

All double whammies by J. Coakley. Numbers 4 and 6 are from *Winning Chess Puzzles For Kids Volume 2* (2010). Problem 5 is a *ChessCafe.com* original (2012).

PDF hyperlinks. You can advance to the solution of any puzzle by clicking on the underlined title above the diagram. To return to the puzzle, click on the title above the solution diagram.

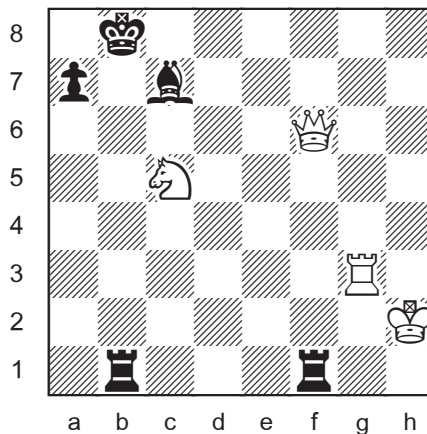
Double Whammy 04



1. Rg6
2. Nf6#

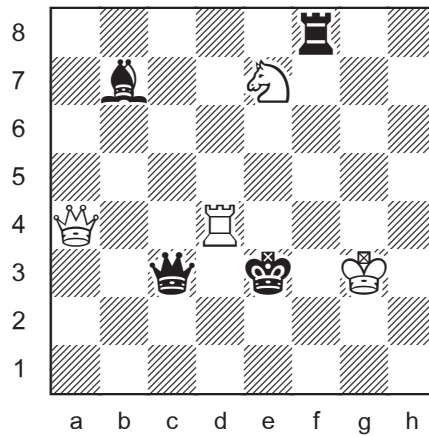
Wham, bam!

Double Whammy 05



- The white rook is pinned by the black bishop.
1. Qf4
- The queen unpins the rook and pins the bishop.
2. Rg8#

Double Whammy 06

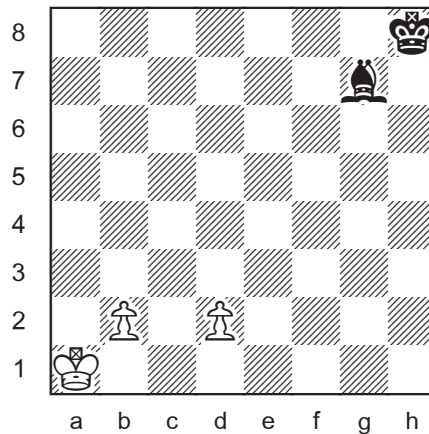


1. Qe8
2. Nf5#

The awesome power of double check.

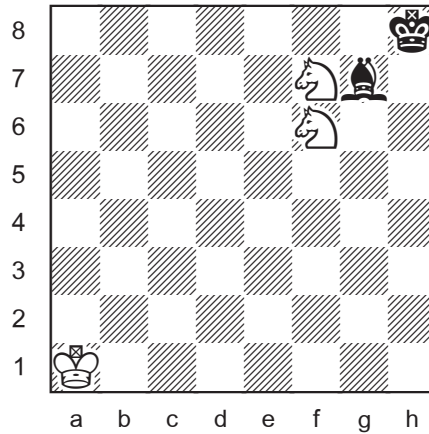
Multi-Wham 02

series-mate in 13
Theodor Steudel 1997
Problemkiste



1. d4 Unpinning the b-pawn.
2. b4 (2.d5 3.d6 4.d7 5.d8=B mates in 14.)
3. b5
4. b6
5. b7
6. b8=N
7. Nd7
8. Nf6 Unpinning the d-pawn.

9. d5
10. d6
11. d7
12. d8=N
13. Nf7# Two underpromotions and mate with two knights versus a bishop. That's impressive.



Until next time!

© Jeff Coakley 2012. Illustrations by Antoine Duff. All rights reserved.
photo: www.marseille.fr